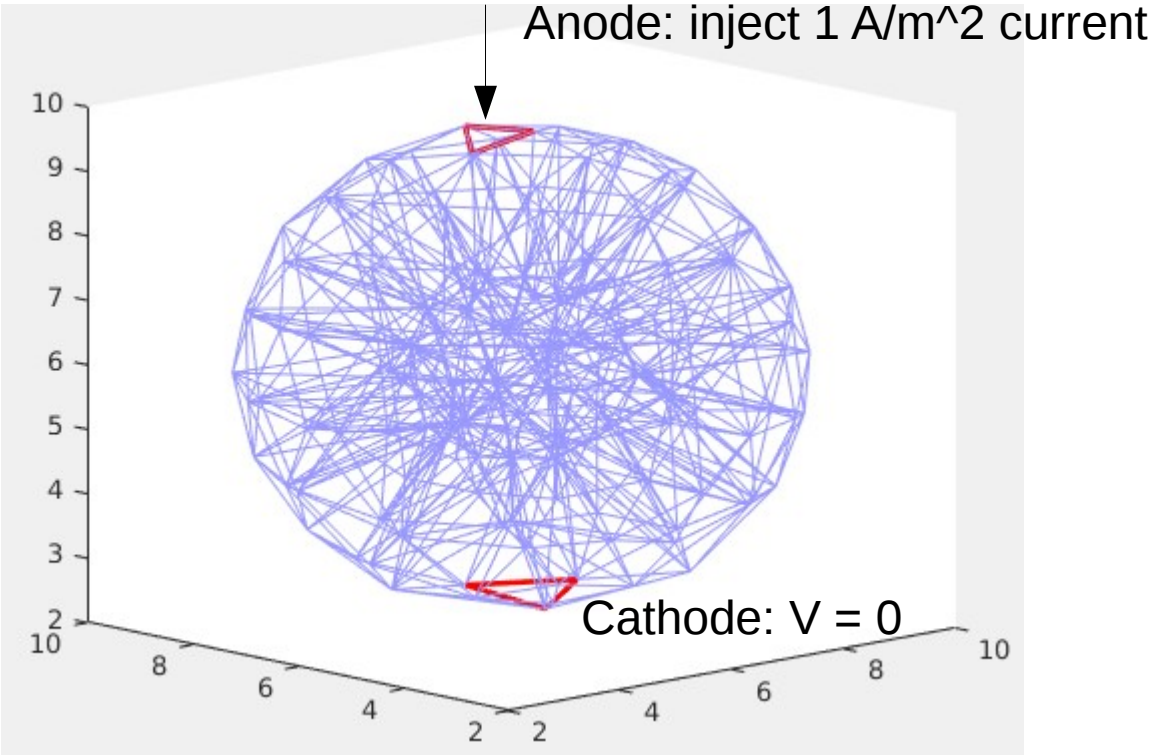
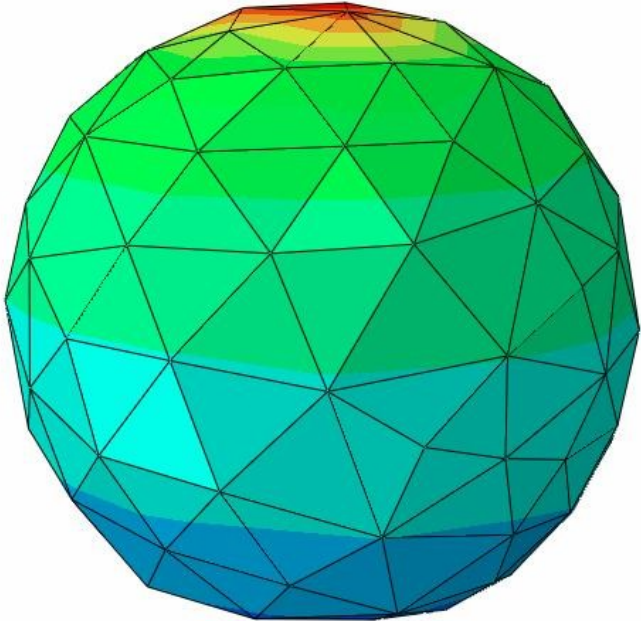
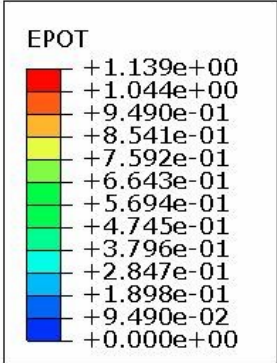


Boundary conditions:



Abaqus results

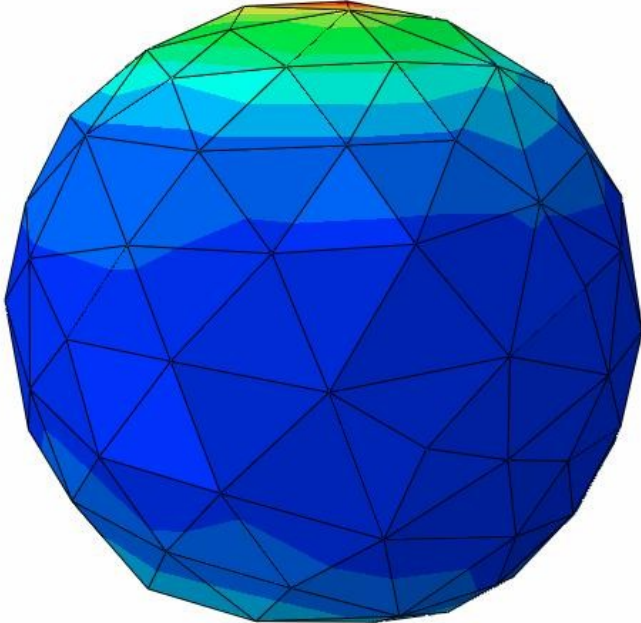
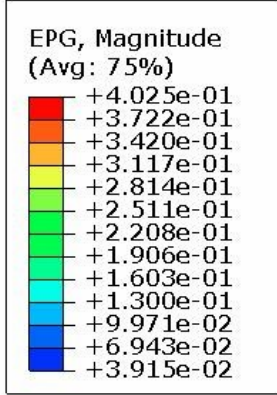


Abaqus export from ScanIP=FE
ODB: toy5 anre_n2s 1497898394_26.odb Abaqus/Standard 6.11-2 Thu Jun 15 13:34:05 Eastern Daylight Time 2017



Step: STEP-1
Increment: 1; Step Time = 1.000
Primary Var: EPOT
Deformed Var: noc sec Deformation Scale Factor: noc sec

Electric potential



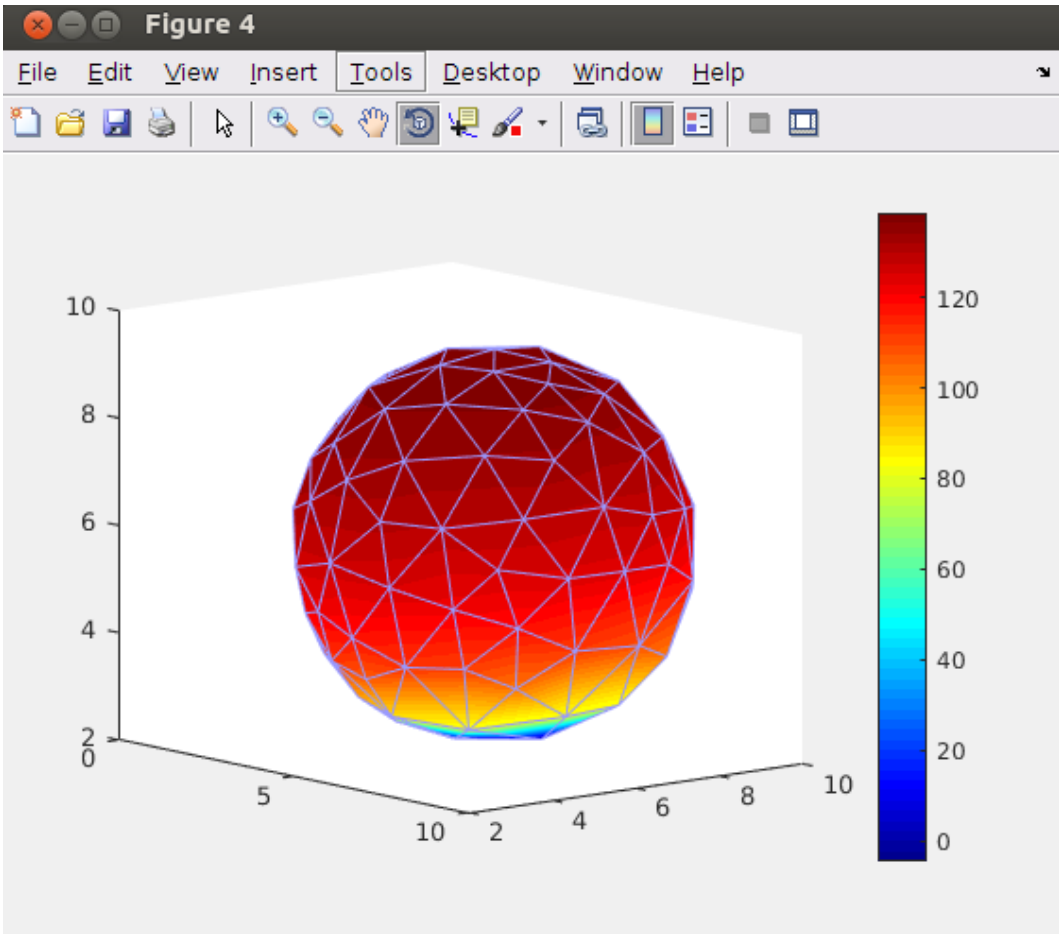
Abaqus export from ScanIP=FE
ODB: toy5 anre_n2s 1497898394_26.odb Abaqus/Standard 6.11-2 Thu Jun 15 13:34:05 Eastern Daylight Time 2017



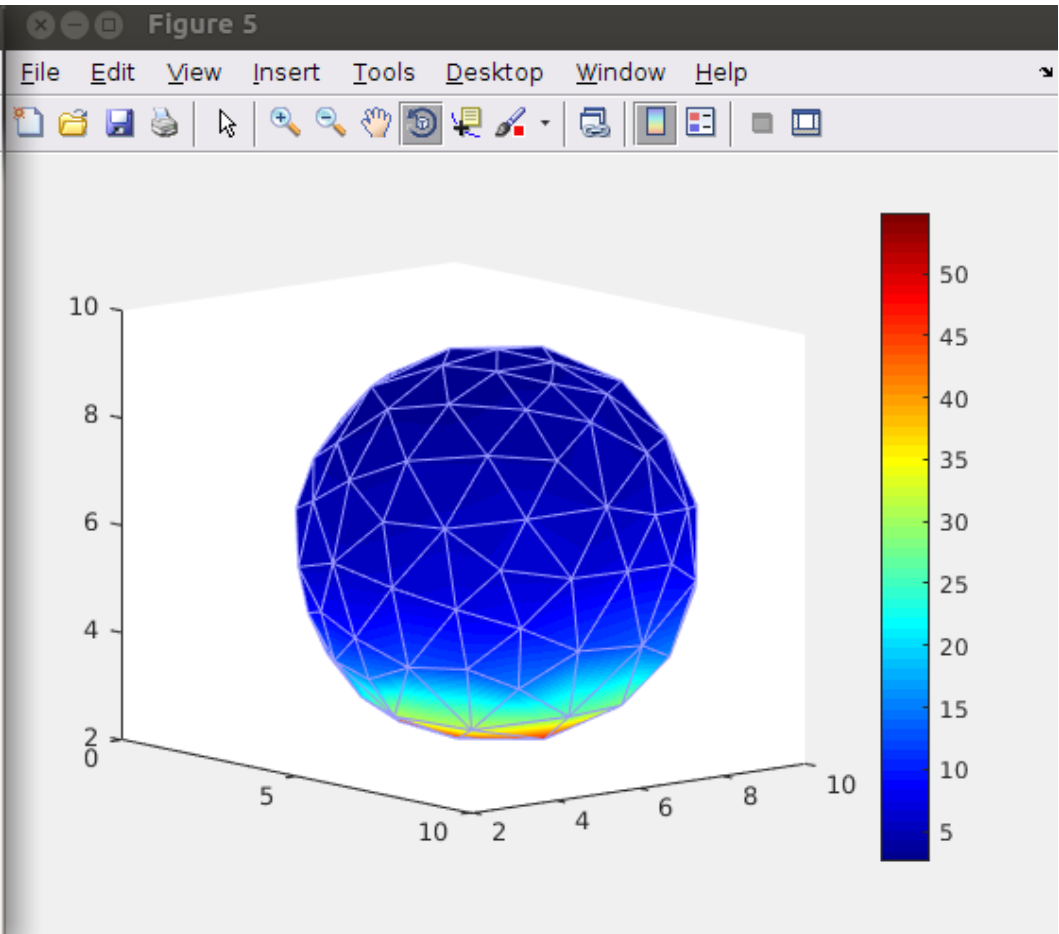
Step: STEP-1
Increment: 1; Step Time = 1.000
Primary Var: EPG, Magnitude
Deformed Var: noc sec Deformation Scale Factor: noc sec

Electric field

getFEM results



Electric potential



Electric field