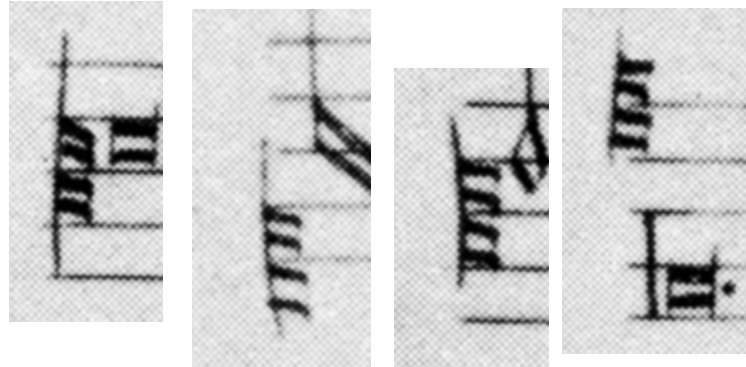


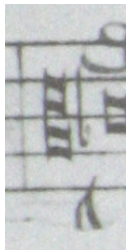
Mensural Clefs

From the Codex San Pietro version of Dufay's Ave Regina Caelorum motet (c 1470) . All are centred on the C staff – confirmed from various Bb notes in the score. Each varies considerably from nominally the same clef. Sample enlargements:

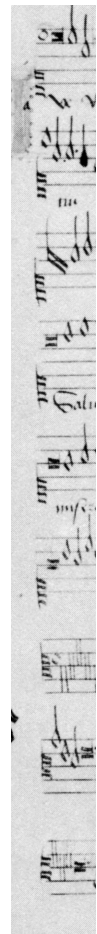
Note the tendency (again, not consistent) for the extremes of clef (c1, c5) to have shorter bars, like the Petrucci clefs. Also, there appears to be an intention to close the



top two and bottom two horizontal strokes, but not the middle two. It looks something like this:



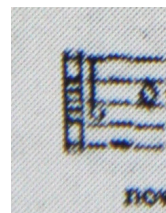
From Dufay's Ave Regina mass (c 1470) from the choirbook of the Burgundian choir. Similar to above, but shorter left vertical. Note the Bb showing this is centred on C.



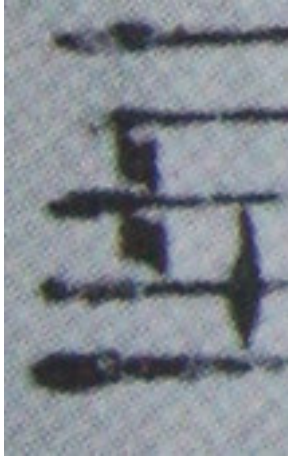
From "Awake Sweet Love", Dowland, 1597:

I think it looks something like this:

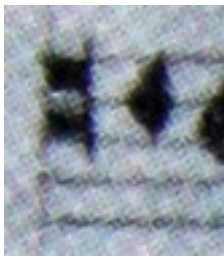
Note the Bb below the centre line of the clef – so it's centred on C.



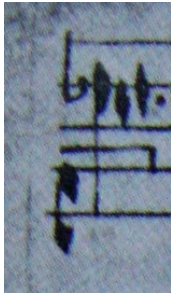
From the Old Hall Manuscript (c 1420). Line down the left. 2 blobs. Centred on C – note the Bb.



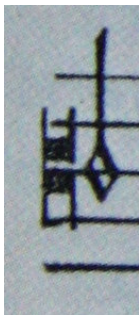
From “the earliest English Passion music”. 15th Century. Pretty much the same as the above.



From the Eton choirbook (late 15C). Similar to those above, but with less vertical on the left and more on the right. Confirmed as being on the C staff from Bb markings further along the staff.



The Robertsbridge Codex – the earliest English keyboard music – circa 1360. Pretty similar to those above. Note the Bb showing this is centred on the C staff.



The earliest English printed music – 1530. Quite similar to the Eton choirbook.