

Title

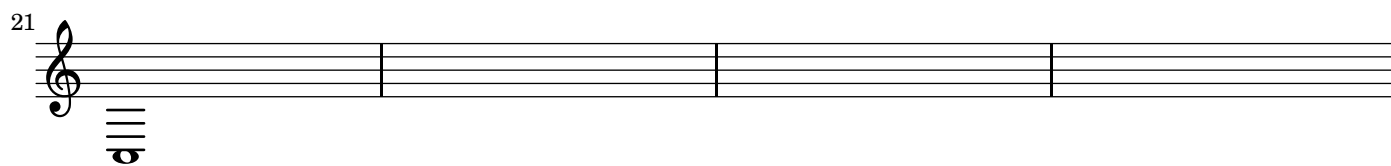
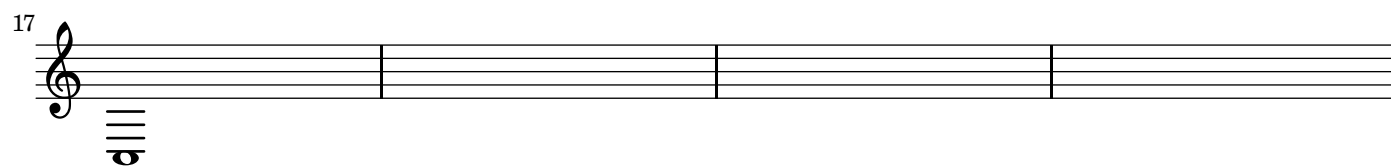
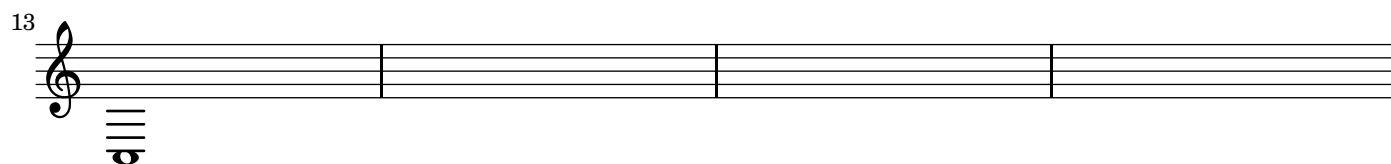
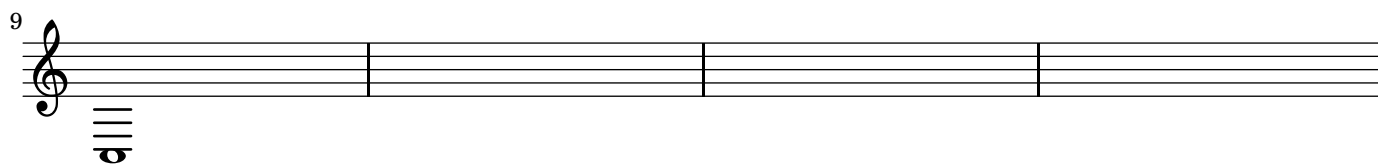
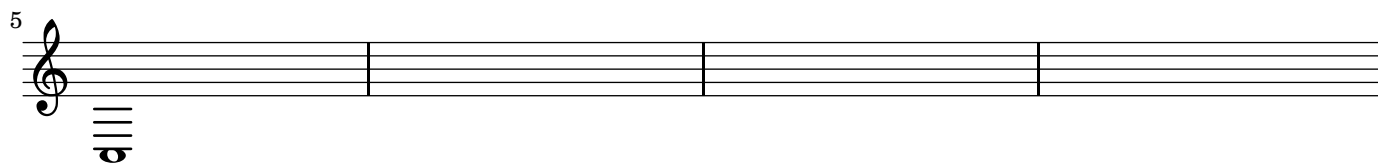
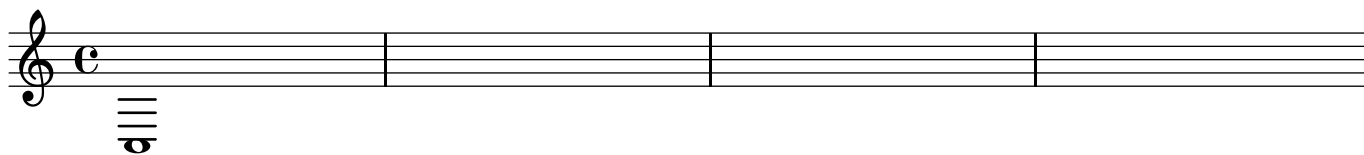
Indice

1st Section

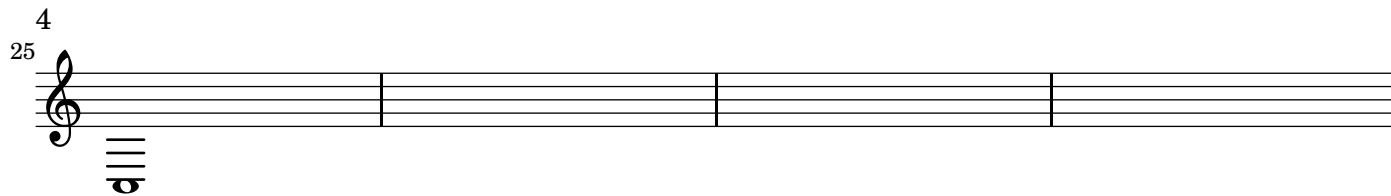
1st item
2nd item

3
6

1st Item

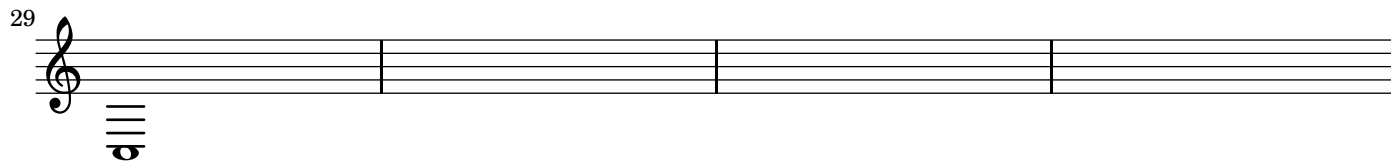


4
25



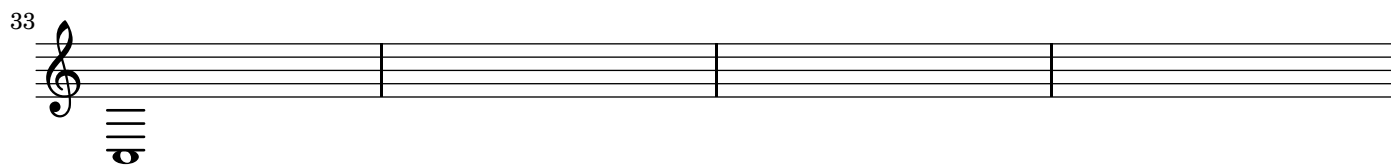
A musical staff system starting at measure 25. It features a treble clef, a key signature of one flat (B-flat), and a 4/4 time signature. The staff is divided into four measures by vertical bar lines. Below the first measure, there is a bass clef, a key signature of one flat, and a 4/4 time signature, followed by four vertical lines representing a whole note.

29



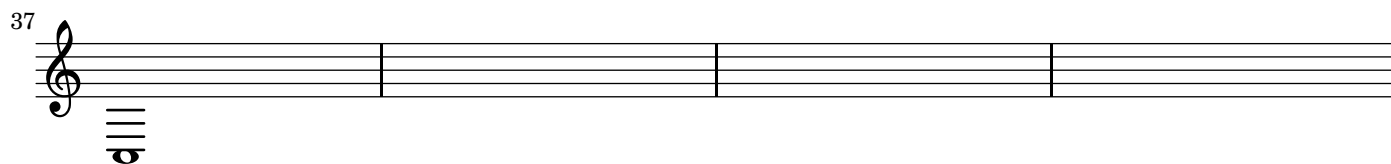
A musical staff system starting at measure 29. It features a treble clef, a key signature of one flat (B-flat), and a 4/4 time signature. The staff is divided into four measures by vertical bar lines. Below the first measure, there is a bass clef, a key signature of one flat, and a 4/4 time signature, followed by four vertical lines representing a whole note.

33



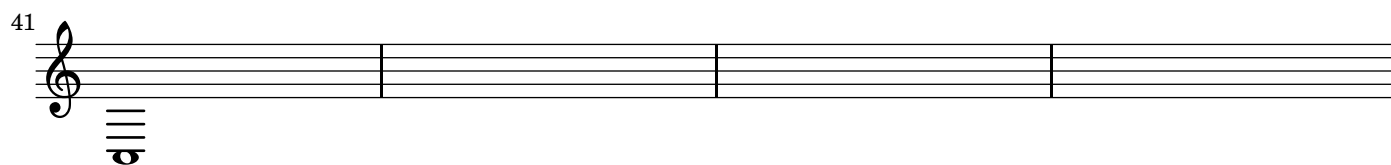
A musical staff system starting at measure 33. It features a treble clef, a key signature of one flat (B-flat), and a 4/4 time signature. The staff is divided into four measures by vertical bar lines. Below the first measure, there is a bass clef, a key signature of one flat, and a 4/4 time signature, followed by four vertical lines representing a whole note.

37



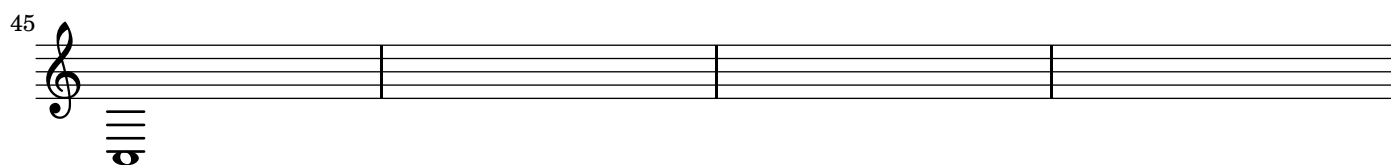
A musical staff system starting at measure 37. It features a treble clef, a key signature of one flat (B-flat), and a 4/4 time signature. The staff is divided into four measures by vertical bar lines. Below the first measure, there is a bass clef, a key signature of one flat, and a 4/4 time signature, followed by four vertical lines representing a whole note.

41



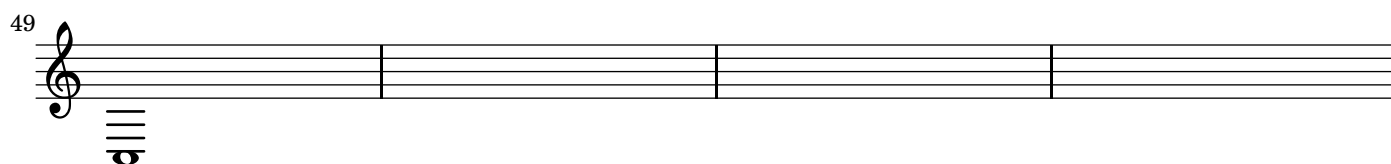
A musical staff system starting at measure 41. It features a treble clef, a key signature of one flat (B-flat), and a 4/4 time signature. The staff is divided into four measures by vertical bar lines. Below the first measure, there is a bass clef, a key signature of one flat, and a 4/4 time signature, followed by four vertical lines representing a whole note.

45



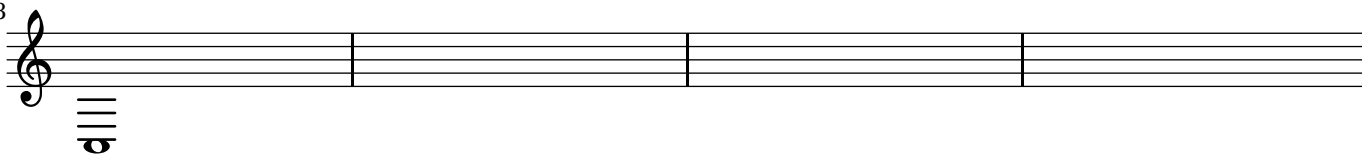
A musical staff system starting at measure 45. It features a treble clef, a key signature of one flat (B-flat), and a 4/4 time signature. The staff is divided into four measures by vertical bar lines. Below the first measure, there is a bass clef, a key signature of one flat, and a 4/4 time signature, followed by four vertical lines representing a whole note.

49

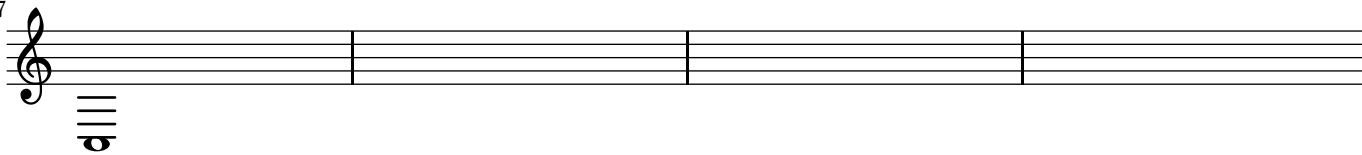


A musical staff system starting at measure 49. It features a treble clef, a key signature of one flat (B-flat), and a 4/4 time signature. The staff is divided into four measures by vertical bar lines. Below the first measure, there is a bass clef, a key signature of one flat, and a 4/4 time signature, followed by four vertical lines representing a whole note.

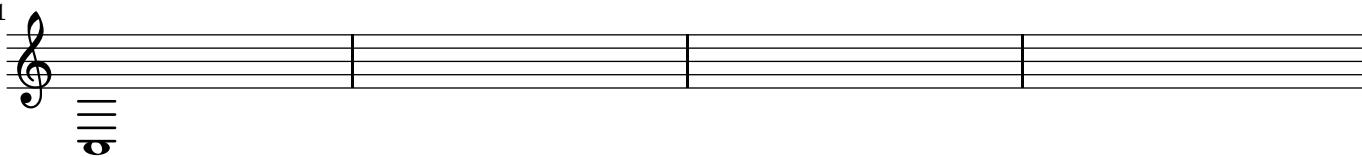
53



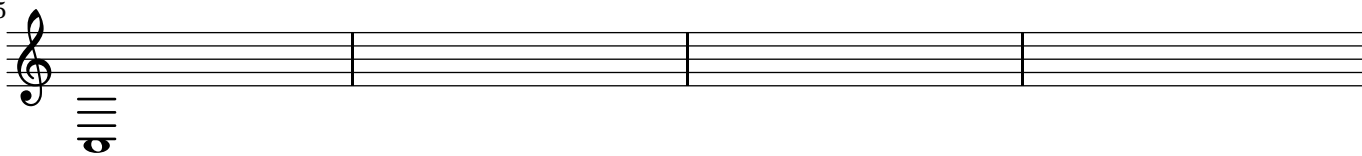
57



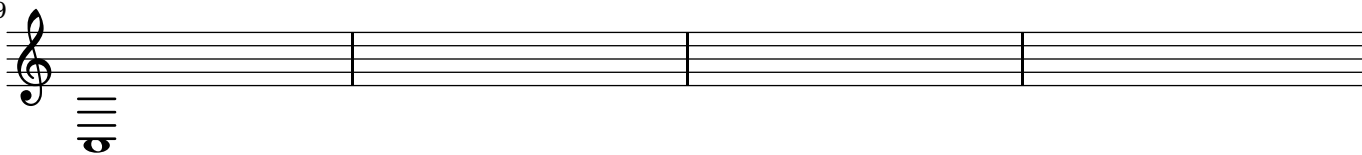
61



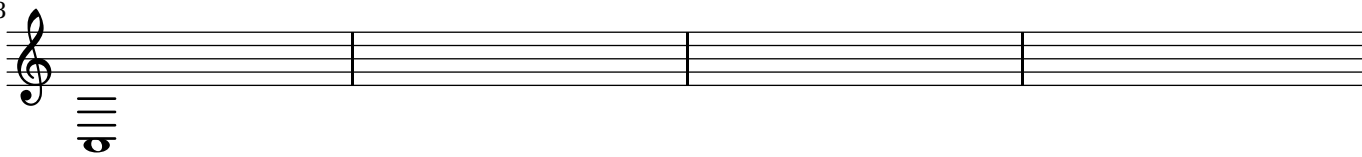
65



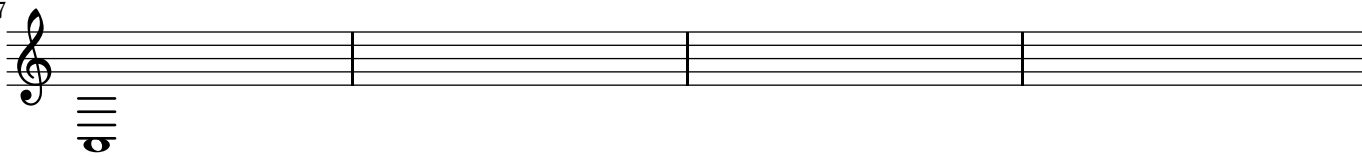
69



73



77



2nd Item

